

# DVB-S2 REGENERATOR

user's manual



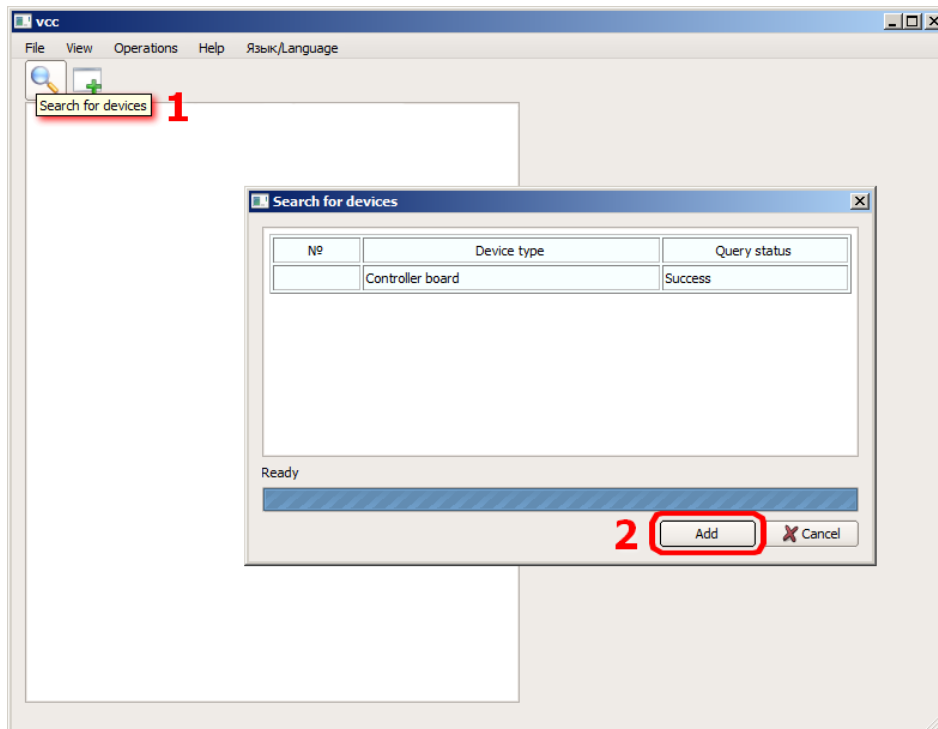
*(VCC software)*

## CONTENT

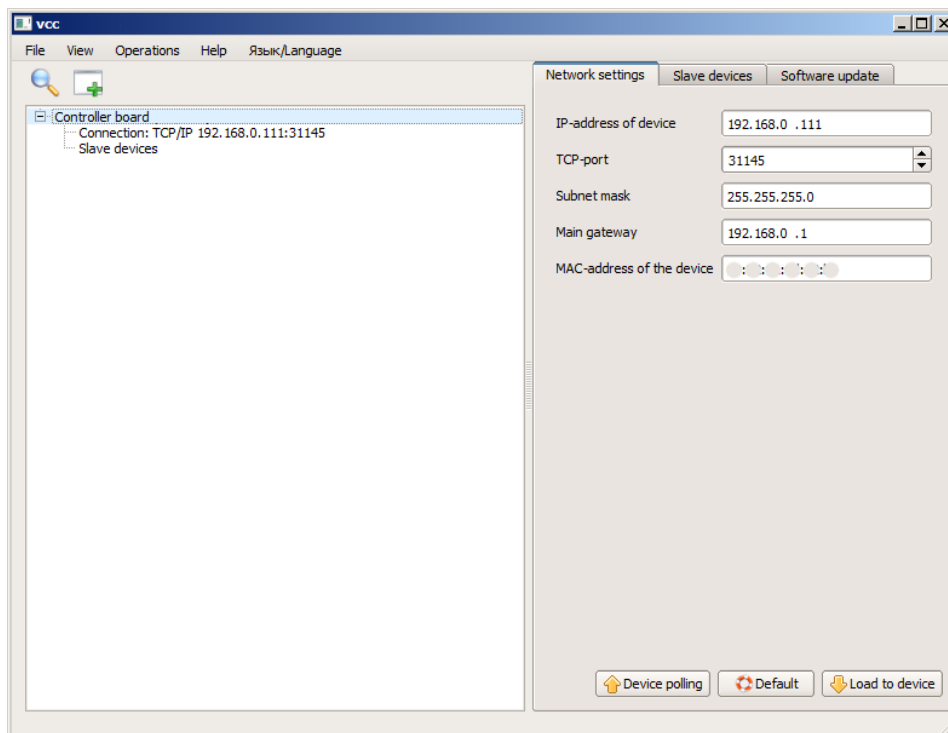
How to add the device to the system? .....	3
How to manage the device? .....	5

## How to add the device to the system?

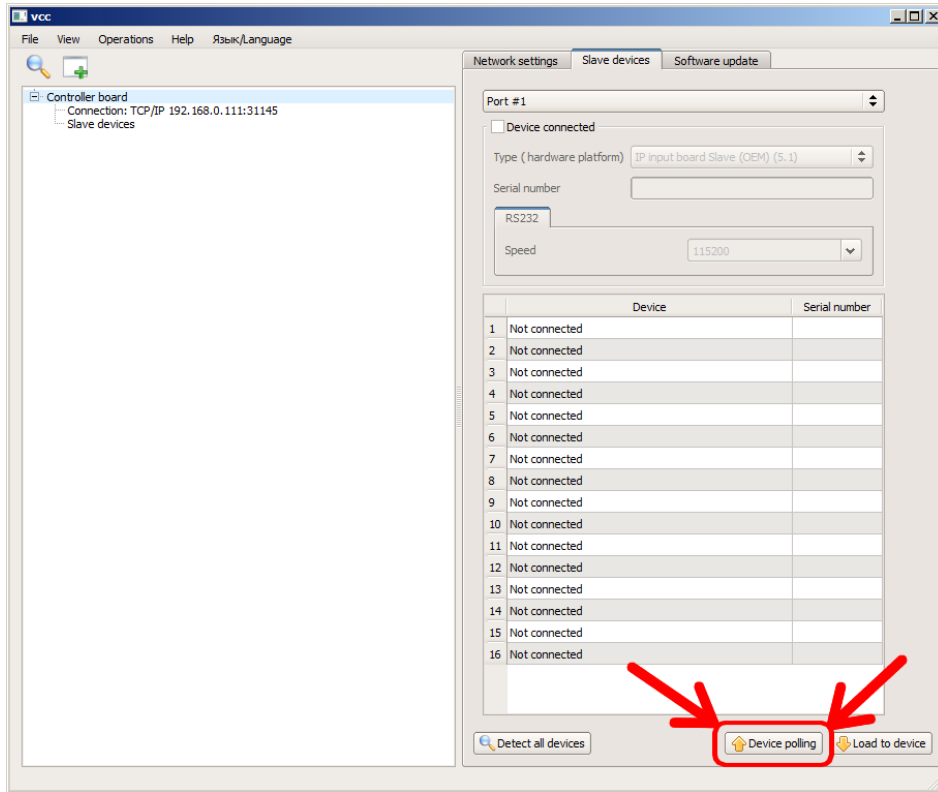
Open control software “VCC”. Click “Search for devices”, then “Add”, as shown on the following screenshot:



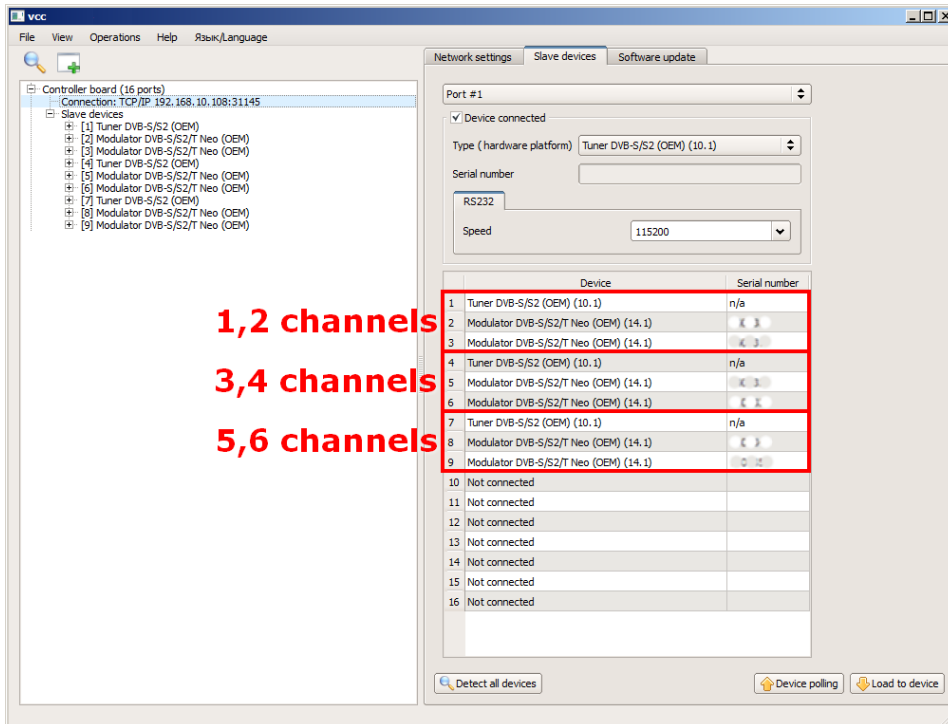
After that you added the **control board** to the system. In the “Network settings” tab you may set its IP address, subnet mask, main gateway, etc. **Do not change MAC!**



On the tab “Slave devices” you need to click “**Device polling**” to obtain information about connected devices to the **control board**:



As a result you will see the following information about connected devices:



## How to manage the device?

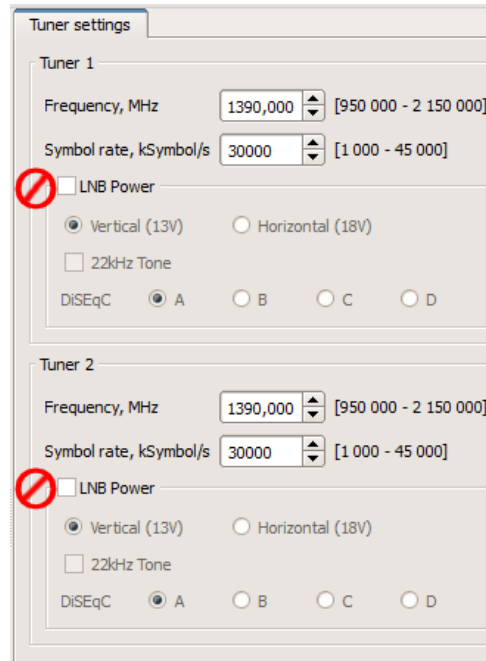
Each **modulator** forms one channel. In group with **tuner** and second **modulator** you obtain 2-channels **regenerator**.

In the tuner window first of all click “**Device polling**” then you may set frequency (fill frequency in L-band, MHz) and symbol rate (kSymb/s). **Other parameters must be disabled!**

### Example:

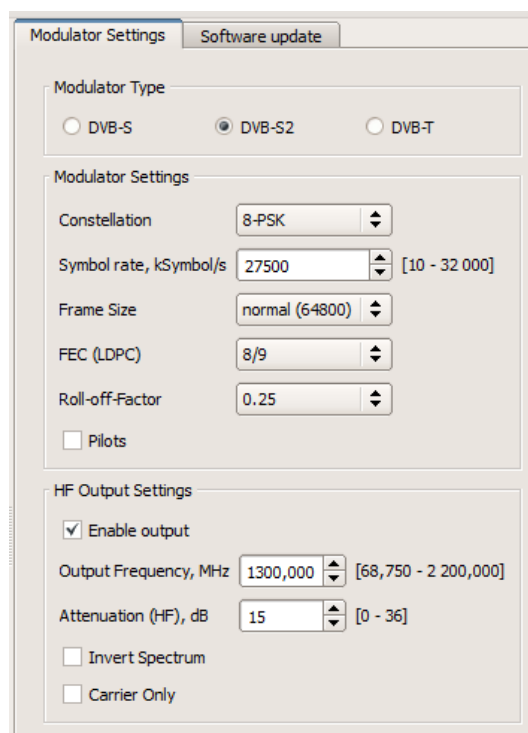
Frequency in the air is 11.75 GHz. LNB LO is 10.75 GHz.

So L-band frequency will be  $11.75 - 10.75 = 1 \text{ GHz} = 1000 \text{ MHz}$ .



*Tuner window*

In the modulator window first of all click “**Device polling**” then you may set parameters filled on the following screenshot for further broadcasting:



*Modulator window*

After all changes do not forget click “*Load to device*”:



# UMT LLC

UMT LLC  
03148 Ukraine, Kyiv,  
V. Verkhovyntsyia str., 10  
tel.: +380991843430

Contact information:

For additional information please visit: <http://www.umt-tv.com>

For sales offices addresses send e-mail to: [info@umt-tv.com](mailto:info@umt-tv.com)

© UMT LLC

All rights are reserved. Reproduction in whole or in part is prohibited without the prior written consent of the copyright owner. The information presented in this document does not form part of any quotation or contract, is believed to be accurate and reliable and may be changed without notice. No liability will be accepted by the publisher for any consequence of its use. Publication thereof does not convey nor imply any license under patent or other industrial or intellectual property rights.