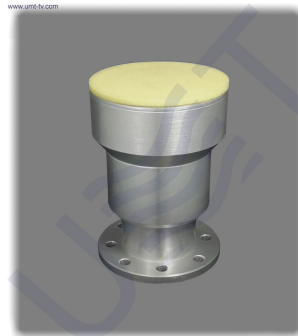




OFFSET FEED



Offset feed (feed horn developed by UMT LLC special for our directed antennas)

Antenna feed (or it is also called like feedhorn or feed horn is possible) is one of the main part of a [parabolic antenna \(satellite dish\)](#) located either in its focus (phase center, if considering axial feed) or out of focus (if considering offset feed) or focal plane, which forms the radiation pattern and polarization of the antenna.

Antenna offset feed is a small horn antenna which is used to convey radio waves between the [BUC](#) and/or [LNB](#) and the [dish \(parabolic reflector\)](#). In [directed antennas](#) the feed is connected to the [BUC \(block up converter or transmitter\)](#) and converts the radio frequency alternating current from the transmitter to radio waves and feeds them to the rest of the antenna which focuses them into a beam.

Our antennas are always supplied with our feeds in a kit. Radiation pattern of the feed, its VSWR, band and other parameters correspond to all our antennas, to their parameters, developing in one technological process. So buying our antennas and using our feeds you obtain absolutely matched system.

Taking into consideration that we (UMT LLC) are developer and system integrator, also do not stop on our technical growth and improvement, know that view of all our devices and equipment including their technical parameters may be different from pictures presented on website and parameters listed on each device webpage.

Note! All details customer has to confirm in advance during ordering and before payment. Those parameters that were not specified and / or were not agreed while ordering will be implemented as basic at the discretion of the manufacturer. Each our customer has 1.5 year warranty and 7 year aftersales support for whole range of our products.