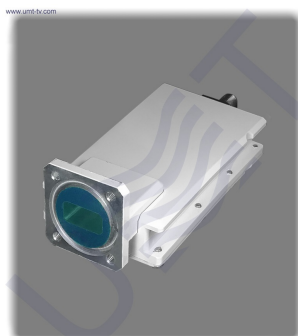


## LNB PLL LO 10.75



Ku-band LNB PLL LO 10.75 is Low Noise Block Down Converter with single LO 10.75 GHz and single 75 Ohm F-type output. LO instability:  $\pm 150$  kHz, Gain: 45 dB, Noise figure: 0.9 dB, Output power P1dB: +3 dBm.

LNB PLL LO 10.75 is Low Noise Block Down Converter which is designed for RF signals gaining and transforming from Ku-band to L-band (intermediate frequencies). The LNB PLL LO 10.75 has a waterproof case. LNB PLL LO 10.75 can be mounted in close proximity to antenna. LNB parameters correspond to MVDS / MITRIS TV broadcasting systems conditions in accordance with DVB-S/S2 or DVB-C standard and can be operated up to 25 carriers. LNB PLL LO 10.75 has input flange of PBR120 type and can be used with regular RRL or receive antennas.

**LO:** 10.75 GHz    **IN:** 11.70 - 12.70 GHz    **OUT:** 950 - 1950 MHz

### KEY FEATURES:

- Wide dynamic range (power at the input)
- Input flange: PBR120
- Output power P1dB: +3 dBm
- Input frequencies: 11.70 - 12.70 GHz
- Output frequencies: 950 - 1950 MHz
- Min. gain: 45 dB
- Oscillator type: PLL
- Operates up to 25 carriers
- Designed for operation in MVDS/MITRIS TV broadcasting systems

Input parameters:	
<b>Input Frequency range</b>	11.70 - 12.70 GHz
<b>Input level, max</b>	-57 dBm
<b>Input VSWR, max</b>	2.0
<b>Input interface</b>	Waveguide WR75, Flange PBR120
Local Oscillator:	
<b>LO frequency</b>	10.75 GHz
LO Phase noise:	
<b>@1 kHz</b>	-75 dBc/Hz
<b>@10 kHz</b>	-85 dBc/Hz
<b>@100 kHz</b>	-95 dBc/Hz

<b>LO instability</b>	± 150 kHz
<b>Output parameters:</b>	
<b>Output frequency range</b>	950 - 1950 (or by order)
<b>Output Power @P1dB</b>	+3 dBm
<b>Gain, min</b>	45 dB
<b>Output interface</b>	F-type female
<b>Output impedance</b>	75 Ohm
<b>Output VSWR, max</b>	2.5
<b>Frequency Response:</b>	
<b>Flatness over Full Band</b>	±2 dB
<b>Flatness over 27MHz Band</b>	±0.75 dB
<b>Spurious:</b>	
<b>Noise Figure (@+25°C)</b>	0.9 dB max
<b>LO leakage, max</b>	-45 dBm
<b>Image rejection, min</b>	45 dBc
<b>Power supply:</b>	
<b>Input voltage</b>	12 VDC - 24 VDC, nominal 18 VDC
<b>Power consumption, max</b>	5.25 W
<b>Environmental:</b>	
<b>Operating temperature</b>	-30°C to +60°C (-22°F to +140°F)
<b>Storage temperature</b>	-40°C to +80°C (-40°F to +176°F)
<b>Operating humidity</b>	0% - 95%
<b>Mechanical:</b>	
<b>Dimensions (W x H x D)</b>	60x42x126 mm
<b>Weight</b>	0.4 kg

*Taking into consideration that we (UMT LLC) are developer and system integrator, also do not stop on our technical growth and improvement, know that view of all our devices and equipment including their technical parameters may be different from pictures presented on website and parameters listed on each device webpage.*

**Note!** *All details customer has to confirm in advance during ordering and before payment. Those parameters that were not specified and / or were not agreed while ordering will be implemented as basic at the discretion of the manufacturer. Each our customer has 1.5 year warranty and 7 year aftersales support for whole range of our products.*