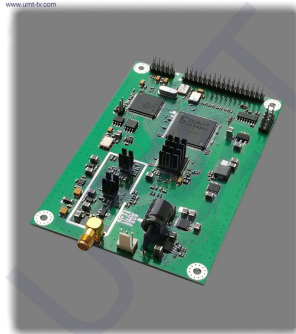




L-BAND DVB-S-S2-T MODULATOR BOARD



L-band DVB-S-S2-T modulator board is designed for DVB TS (transport stream) modulating, creating the L-band IF signal from parallel TS for further broadcasting in DVB-S, DVB-S2 or DVB-T standards.

L-band DVB-S-S2-T modulator board can be used in various converters, modulators, transmodulators and other digital broadcasting equipment.

The sources of input transport stream for this modulator board may be the followings:

- [2 ch DVB-S-S2 receiver](#);
- [DVB IP input/output board](#);
- [DVB ASI TS input board](#);
- *etc.*

KEY FEATURES:

- High quality of the modulated signal;
- Remote management, monitoring and configuration by IP (using our [IP control board](#))
- High symbol rate;
- Modulation up to 32APSK;
- Small size and low power consumption;
- Flexibility of scheme and devices which include our [DVB boards](#).

[Video instructions about L-band DVB-S-S2-T modulator board watch here](#)



Parameters	
Modulation type (by request)	DVB-S, DVB-S2, DVB-T
Input	
Input signal	parallel DVB transport stream
Type of input connector	PLD-34
Modulation parameters	
DVB-S mode	
Frequency range	950...2150 MHz
Constellation	QPSK
MER	>27 dB
FEC	1/2, 2/3, 3/4, 5/6, 7/8
Symbolrate	1...45 MSym/s
DVB-S2 mode	

Frequency range	950...2150 MHz
Constellation	QPSK, 8PSK, 16APSK, 32APSK (by request)
MER	>27 dB
FEC	1/4, 1/3, 2/5, 1/2, 3/5, 2/3, 3/4, 4/5, 5/6, 8/9, 9/10
Symbolrate	1 ... 45 MSymb/s (<u>8PSK</u>); 1 ... 38.7 MSymb/s (<u>16APSK</u> , 1 channel mode), 1 ... 43 MSymb/s (<u>16APSK</u> , 1 channel mode, <u>by request</u>); 1 ... 31 MSymb/s (<u>32APSK</u> , 1 channel mode), 1 ... 34.5 MSymb/s (<u>32APSK</u> , 1 channel mode, <u>by request</u>); in steps of 1 KSymb/s
Roll-Off-Factor	0.2, 0.25, 0.35
Pilots	on/off
DVB-T mode	
Frequency range	70...865 MHz
Constellation	QPSK, QAM16, QAM64
MER	>40 dB
FEC	1/2, 2/3, 3/4, 5/6, 7/8
Guard Interval	1/4, 1/8, 1/16, 1/32
IFFT Mode	2k, 4k, 8k
Bandwidth	5, 6, 7, 8 MHz
Output	
Output connector type	SMA
Output impedance	50 Ohm
Other	
Control Interface	TCP/IP
Supply voltage	8...18 V
Power consumption	~ 7 W
Board dimensions	130x82 mm

Taking into consideration that we (UMT LLC) are developer and system integrator, also do not stop on our technical growth and improvement, know that view of all our devices and equipment including their technical parameters may be different from pictures presented on website and parameters listed on each device webpage.

Note! All details customer has to confirm in advance during ordering and before payment. Those parameters that were not specified and / or were not agreed while ordering will be implemented as basic at the discretion of the manufacturer. Each our customer has 1.5 year warranty and 7 year aftersales support for whole range of our products.