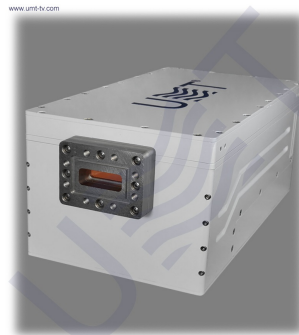


## BUC-C150



BUC-C150 is block up-converter with fixed output power 150 W. BUC-C150 has LED status indication at the rear side.

The 150W C-band BUC is a rugged, compact solid state amplifier (SSPA) with integrated block up converter (BUC) suitable for fixed and mobile satellite communications with high data rate or multicarrier requirements. The 150W C-band BUC is an outdoor, environmentally sealed product that can be mounted close to the antenna feed to reduce waveguide loss.

### KEY FEATURES:

- Outdoor SSPA with integrated BUC
- Compact, Lightweight Package
- M&C capability via RS232, Ethernet
- High linearity

Input parameters:		
Input Frequency range	950 - 1525 MHz	
Input impedance	50 Ohm	
Input VSWR, max	1.5	
Input interface	N-type Female	
Local Oscillator:		
LO frequency	4900 MHz	
LO Phase noise:	@1 kHz	-75 dBc/Hz
	@10 kHz	-85 dBc/Hz
	@100 kHz	-95 dBc/Hz
Output parameters:		
Output frequency range	5850 - 6425 MHz	
Output Power (GaN)	P <sub>sat</sub>	52 dBm
	P <sub>linear</sub>	49 dBm
Gain, min	76 dB	
IMD3 (two tones)	-25 dBc max 2 signal 5 MHz apart at P <sub>linear</sub>	
Output interface	WR137-G (Waveguide Flange)	
Output VSWR, max	2.0:1	
Frequency Response:		

Flatness over Full Band	±2 dB (4 dB p-p max)
Gain flatness 40 MHz	± 0.5 dB
External frequency	10 MHz
Power range ref.	± 5 dBm
<b>Spurious:</b>	
In-band P <sub>linear</sub> , max	-50 dBc
Out-Band, max	-60 dBc
LO leakage, max	-40 dBm
Image rejection, min	60 dB
<b>Power Supply:</b>	
Input voltage	110 - 265VAC, 47-63Hz
Power consumption, max	< 800 W
<b>Environmental:</b>	
Operating temperature	-20°C to +50°C
Operating humidity	0 - 95 %
<b>Interfaces:</b>	
IF input connector: N-type female; RF output connector: WR137-G	
AC connector: PQ14-3; Monitor & Control connector: FQ24-19	
Monitor & Control: Serial RS-232, Step Attenuator, Ethernet	
LED indicator: Green - OK, Red - Alarm, blink Yellow - MUTE	
<b>Mechanical:</b>	
Dimensions	333x155x121 mm
Weight, max	11 kg

*Taking into consideration that we (UMT LLC) are developer and system integrator, also do not stop on our technical growth and improvement, know that view of all our devices and equipment including their technical parameters may be different from pictures presented on website and parameters listed on each device webpage.*

**Note!** All details customer has to confirm in advance during ordering and before payment. Those parameters that were not specified and / or were not agreed while ordering will be implemented as basic at the discretion of the manufacturer. Each our customer has 1.5 year warranty and 7 year aftersales support for whole range of our products.