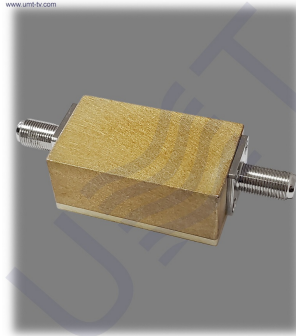


## BANDPASS FILTER 1.3 GHZ



Bandpass filter for the frequency range of 1240 - 1300 MHz

Bandpass filter is designed for signal transmission in the frequency range of 1240 - 1300 MHz, with a central frequency of 1270 MHz. It's made in a non-hermetic case with F-type input and output connectors, for use in microwave paths with a characteristic line resistance of 75 Ohms

Parameter	Value
Bandwidth, MHz	1240-1300
Non-uniformity of the frequency response in the working band, no more than, dB	0.6
Input losses, dB	0.6
Return loss, dB	13
Suppression level, dB:	
1190 MHz	45
1350 MHz	31
VSWR	1.7

*Taking into consideration that we (UMT LLC) are developer and system integrator, also do not stop on our technical growth and improvement, know that view of all our devices and equipment including their technical parameters may be different from pictures presented on website and parameters listed on each device webpage.*

**Note!** All details customer has to confirm in advance during ordering and before payment. Those parameters that were not specified and / or were not agreed while ordering will be implemented as basic at the discretion of the manufacturer. Each our customer has 1.5 year warranty and 7 year aftersales support for whole range of our products.